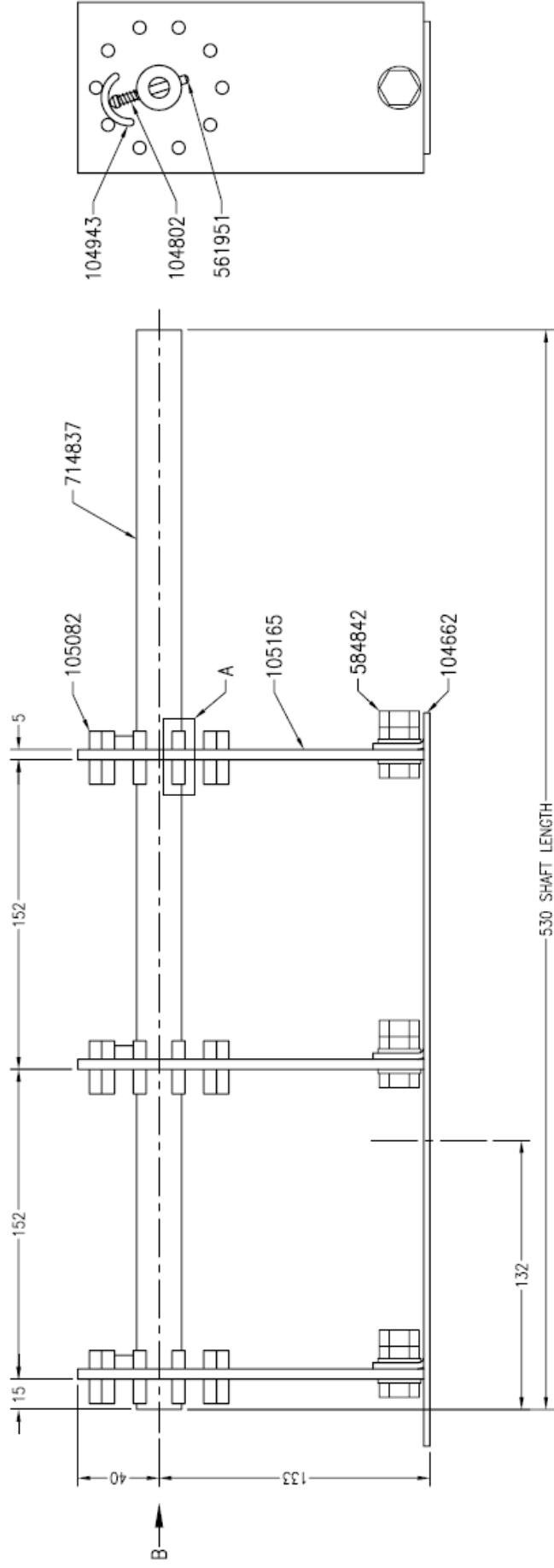
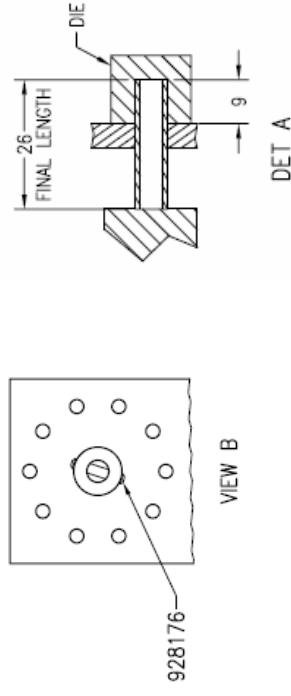


TECHNICAL DATASHEET

Insulect item code - 102848
Description - OCTS, 8-9 POSN, 3 PH, 22kV, 152 Separation PL
Date - 16 July 2008
Version - 00

NOTES:

- 1 FIXED CONTACTS TO BE PERMANENTLY FIXED TO CONTACT PLATE BY UPSETTING WITH DIE
7.144 DIA. AND 9 DEEP AS SHOWN ON DETAIL A
- 2 WOOD DOWEL (928176) FIXED TO SHAFT WITH P.V.A. GLUE
- 3 LUBRICATE ALL POINTS OF CONTACT ON MOVING PARTS WITH APPROVED LUBRICANT BEFORE
MOVING DRIVE SHAFT AFTER DRY-OUT, ALSO LUBRICATE DRIVE PIN WHERE IT PASSES THROUGH
SHAFT



30 Staple Street, Seventeen Mile Rocks, QLD 4073, Brisbane, Australia

Ph +61-7-3725 5300 Fax +61-7-3279 3488

5-7 Luisa Ave, Dandenong South, VIC 3175, Melbourne, Australia

Ph +61-3-9768 3404 Fax +61-3-9768 3405

Email: sales@insulect.com Website: www.insulect.com

