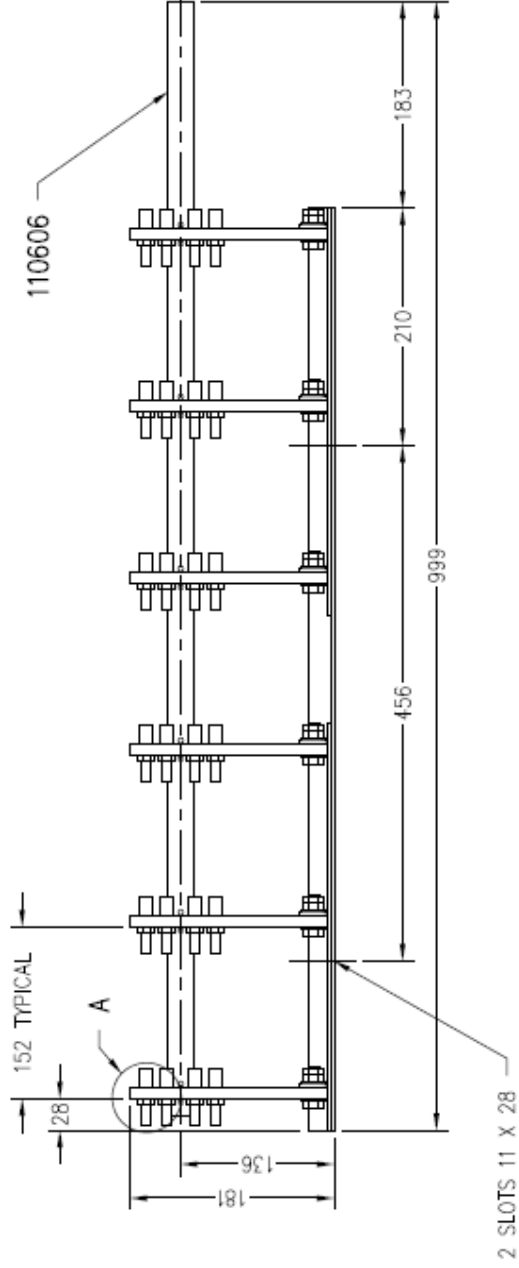
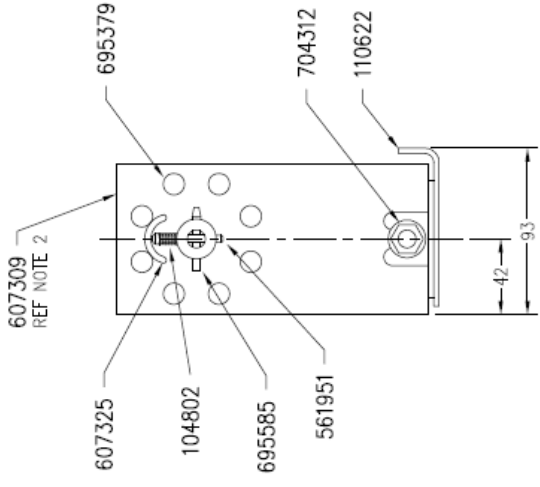
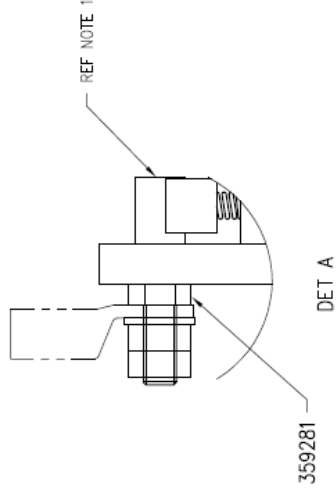


TECHNICAL DATASHEET

Insulect item code - 110598
Description - OCTS, 5-7 POSN, 6 PL, 24KV, 145A, 152 PL SEPARATION
Date - 16 July 2008
Version - 00

NOTE

- 1 AFTER ASSEMBLY COAT CONTACT SURFACES WITH 704486 (VASOLINE)
- 2 607309 MUST BE IN LINE ENSURING NO BENDING FORCES ON 110606



30 Staple Street, Seventeen Mile Rocks, QLD 4073, Brisbane, Australia

Ph +61-7-3725 5300 Fax +61-7-3279 3488

5-7 Luisa Ave, Dandenong South, VIC 3175, Melbourne, Australia

Ph +61-3-9768 3404 Fax +61-3-9768 3405

Email: sales@insulect.com Website: www.insulect.com