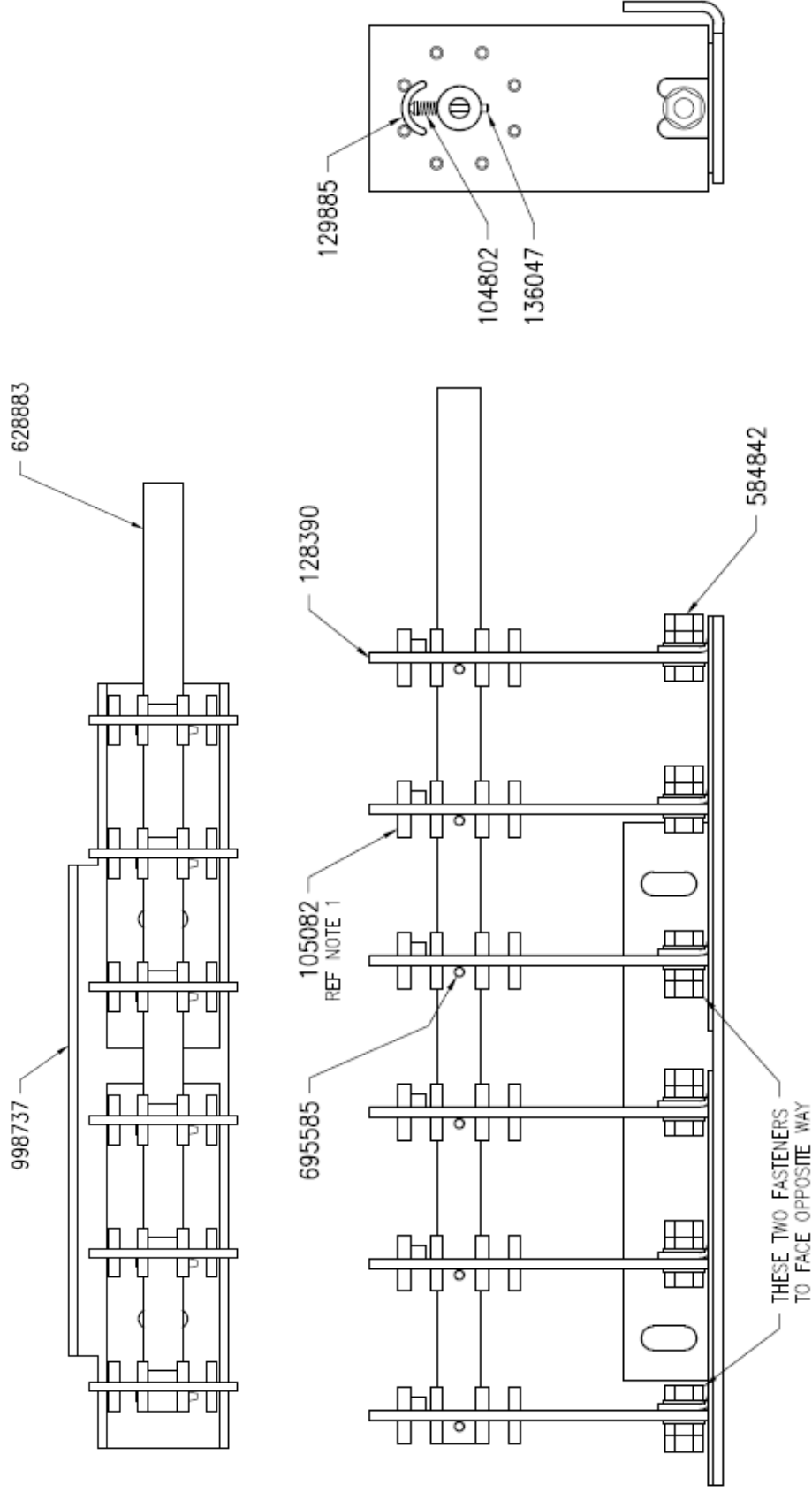


# TECHNICAL DATASHEET

**Insulect item code** - 128382  
**Description** - OCTS, 7 POSN, 6 PL, 50A  
**Date** - 16 July 2008  
**Version** - 00

**NOTES**

- 1 AFTER ASSY COAT CONTACT SURFACES WITH 704486 (VASOLINE)
- 2 PLATES 128390 MUST BE ALIGNED TO ENSURE NO BENDING FORCES ON SHAFT



**30 Staple Street, Seventeen Mile Rocks, QLD 4073, Brisbane, Australia**

Ph +61-7-3725 5300 Fax +61-7-3279 3488

**5-7 Luisa Ave, Dandenong South, VIC 3175, Melbourne, Australia**

Ph +61-3-9768 3404 Fax +61-3-9768 3405

Email: [sales@insulect.com](mailto:sales@insulect.com) Website: [www.insulect.com](http://www.insulect.com)