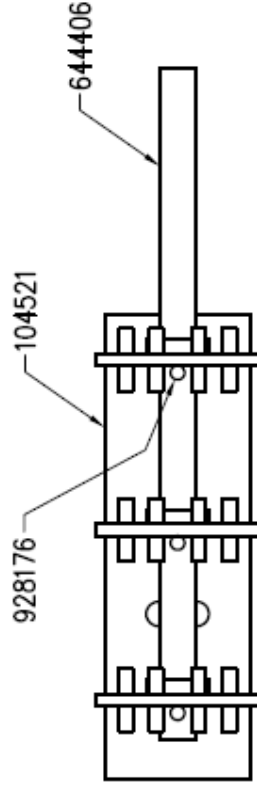
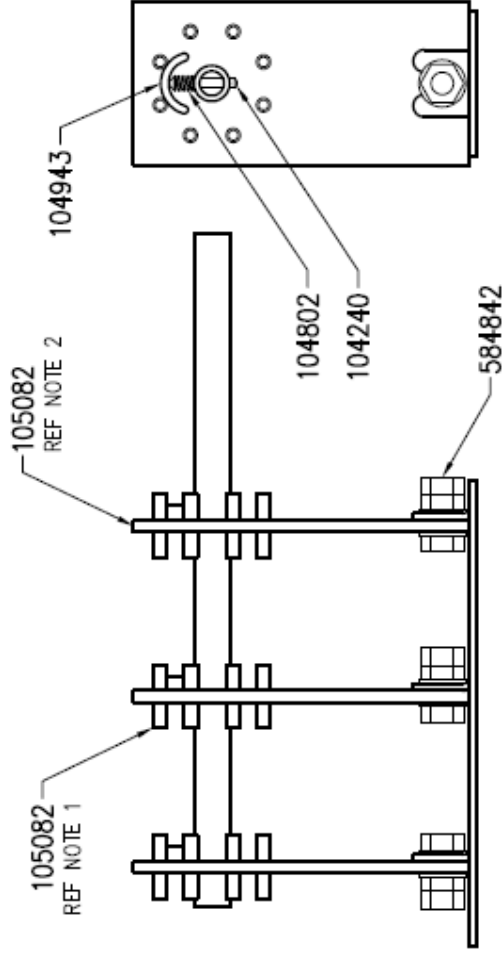


TECHNICAL DATASHEET

Insulect item code - 137745
 Description - OCTS, 5-7 POSN, 3 PH, 22kV
 Date - 16 July 2008
 Version - 00

NOTE

- 1 AFTER ASSY COAT CONTACT SURFACES WITH 704486 (VASOLINE)
- 2 ITEMS 105082 MUST BE IN LINE ENSURING NO BENDING FORCES ON 644406



30 Staple Street, Seventeen Mile Rocks, QLD 4073, Brisbane, Australia

Ph +61-7-3725 5300 Fax +61-7-3279 3488

5-7 Luisa Ave, Dandenong South, VIC 3175, Melbourne, Australia

Ph +61-3-9768 3404 Fax +61-3-9768 3405

Email: sales@insulect.com Website: www.insulect.com