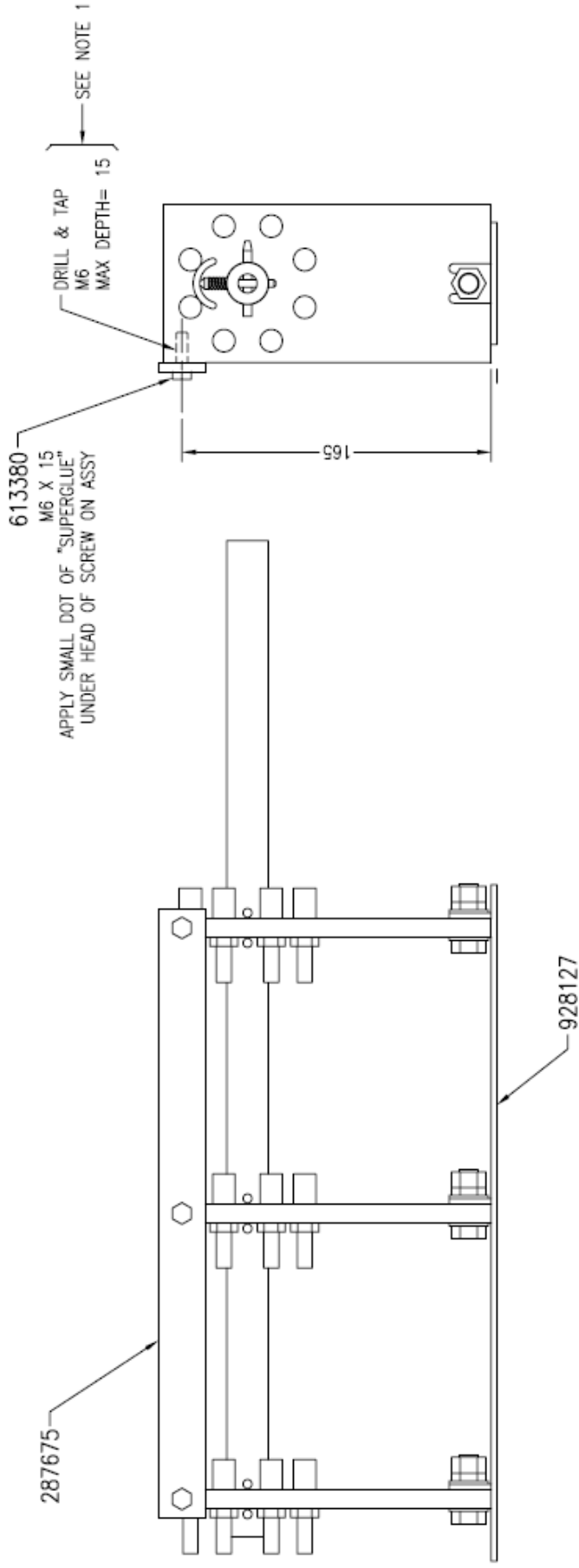


TECHNICAL DATASHEET

Insulect item code - 361629
Description - OCTS, 5-7 POSN, 3 PH, 24KV, 145A
 BRACED VERSION OF 928127
Date - 16 July 2008
Version - 00

NOTES

- 1 BOARD MAY SPLIT
CLAMP BOARD DURING DRILLING & TAPPING



30 Staple Street, Seventeen Mile Rocks, QLD 4073, Brisbane, Australia

Ph +61-7-3725 5300 Fax +61-7-3279 3488

5-7 Luisa Ave, Dandenong South, VIC 3175, Melbourne, Australia

Ph +61-3-9768 3404 Fax +61-3-9768 3405

Email: sales@insulect.com Website: www.insulect.com