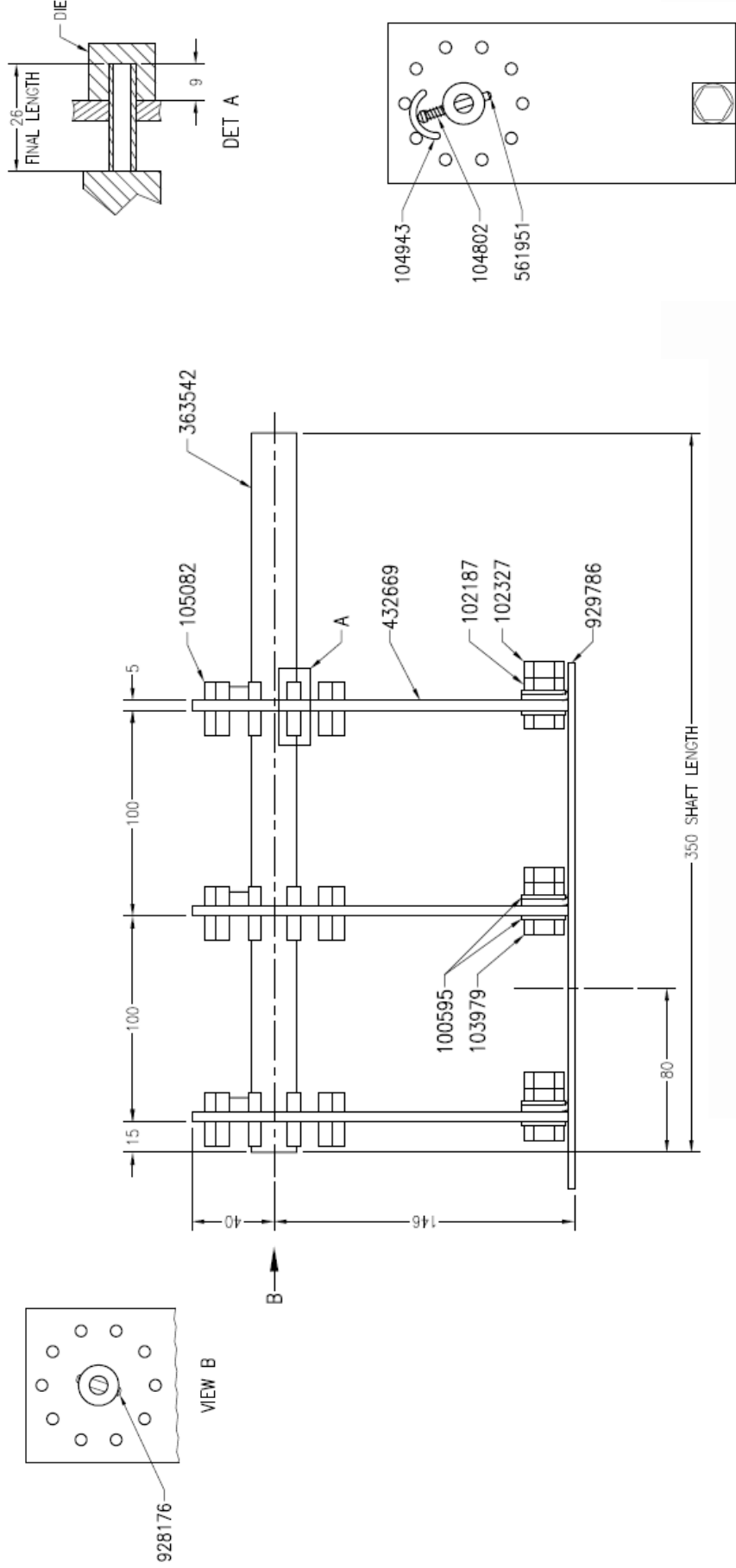


# TECHNICAL DATASHEET

**Insulect item code** - 363559  
**Description** - OCTS, 8-9 POSN, 3 PH, 33kV, 100 SEPARATION PL  
**Date** - 16 July 2008  
**Version** - 00

**NOTES:**

- 1 FIXED CONTACTS TO BE PERMANENTLY FIXED TO CONTACT PLATE BY UPSETTING WITH DIE 7.144 DIA, AND 9 DEEP AS SHOWN ON DETAIL A
- 2 WOOD DOWELL (928176) FIXED TO SHAFT WITH P.V.A. GLUE
- 3 LUBRICATE ALL POINTS OF CONTACT ON MOVING PARTS WITH APPROVED LUBRICANT BEFORE MOVING DRIVE SHAFT AFTER DRY-OUT, ALSO LUBRICATE DRIVE PIN WHERE IT PASSES THROUGH SHAFT



**30 Staple Street, Seventeen Mile Rocks, QLD 4073, Brisbane, Australia**

Ph +61-7-3725 5300 Fax +61-7-3279 3488

**5-7 Luisa Ave, Dandenong South, VIC 3175, Melbourne, Australia**

Ph +61-3-9768 3404 Fax +61-3-9768 3405

Email: [sales@insulect.com](mailto:sales@insulect.com) Website: [www.insulect.com](http://www.insulect.com)