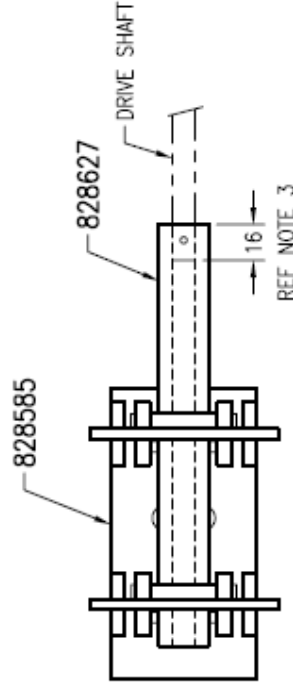
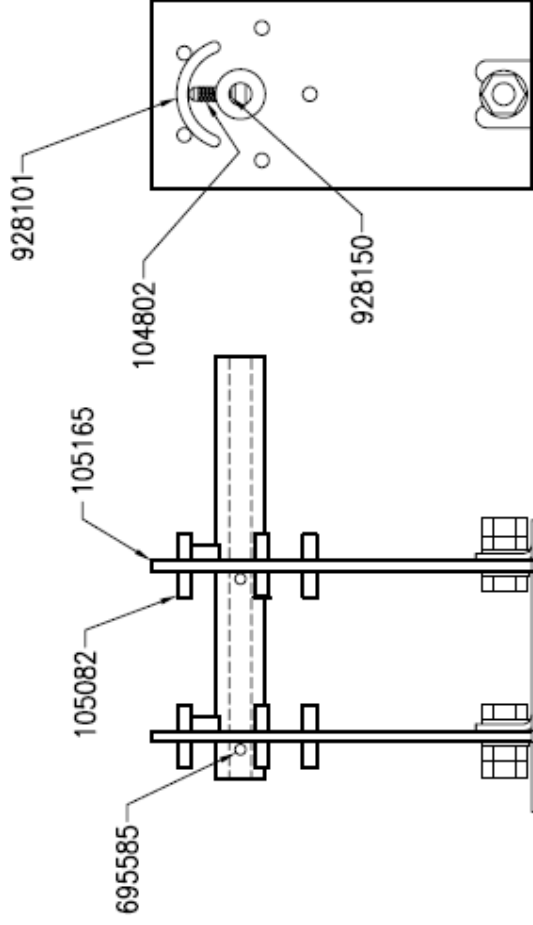


TECHNICAL DATASHEET

Insulect item code - 828619
Description - OCTS, DUAL RATIO, 1 PH
Date - 16 July 2008
Version - 00

NOTES

- 1 AFTER ASSY COAT CONTRACT SURFACES WITH 704486 (VASOLINE)
- 2 PLATES 105165 MUST BE ALIGNED TO ENSURE NO BENDING FORCES ON SHAFT
- 3 MAXIMUM DEPTH OF DRIVE SHAFT INSIDE DRIVE TUBE



30 Staple Street, Seventeen Mile Rocks, QLD 4073, Brisbane, Australia

Ph +61-7-3725 5300 Fax +61-7-3279 3488

5-7 Luisa Ave, Dandenong South, VIC 3175, Melbourne, Australia

Ph +61-3-9768 3404 Fax +61-3-9768 3405

Email: sales@insulect.com Website: www.insulect.com